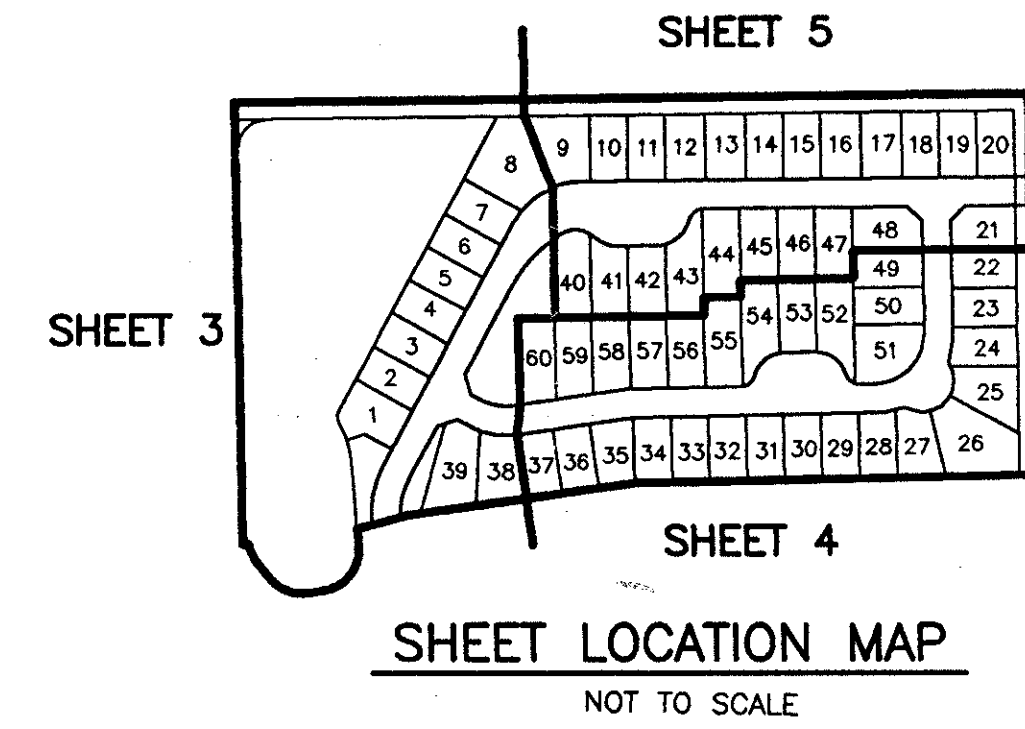


# WINSTON TRAILS PARCEL FOURTEEN

PART OF WINSTON TRAILS P.U.D.  
SITUATE IN SECTION 2, TOWNSHIP 45 SOUTH, RANGE 42 EAST  
PALM BEACH COUNTY, FLORIDA  
APRIL, 1998 SHEET 4 OF 5

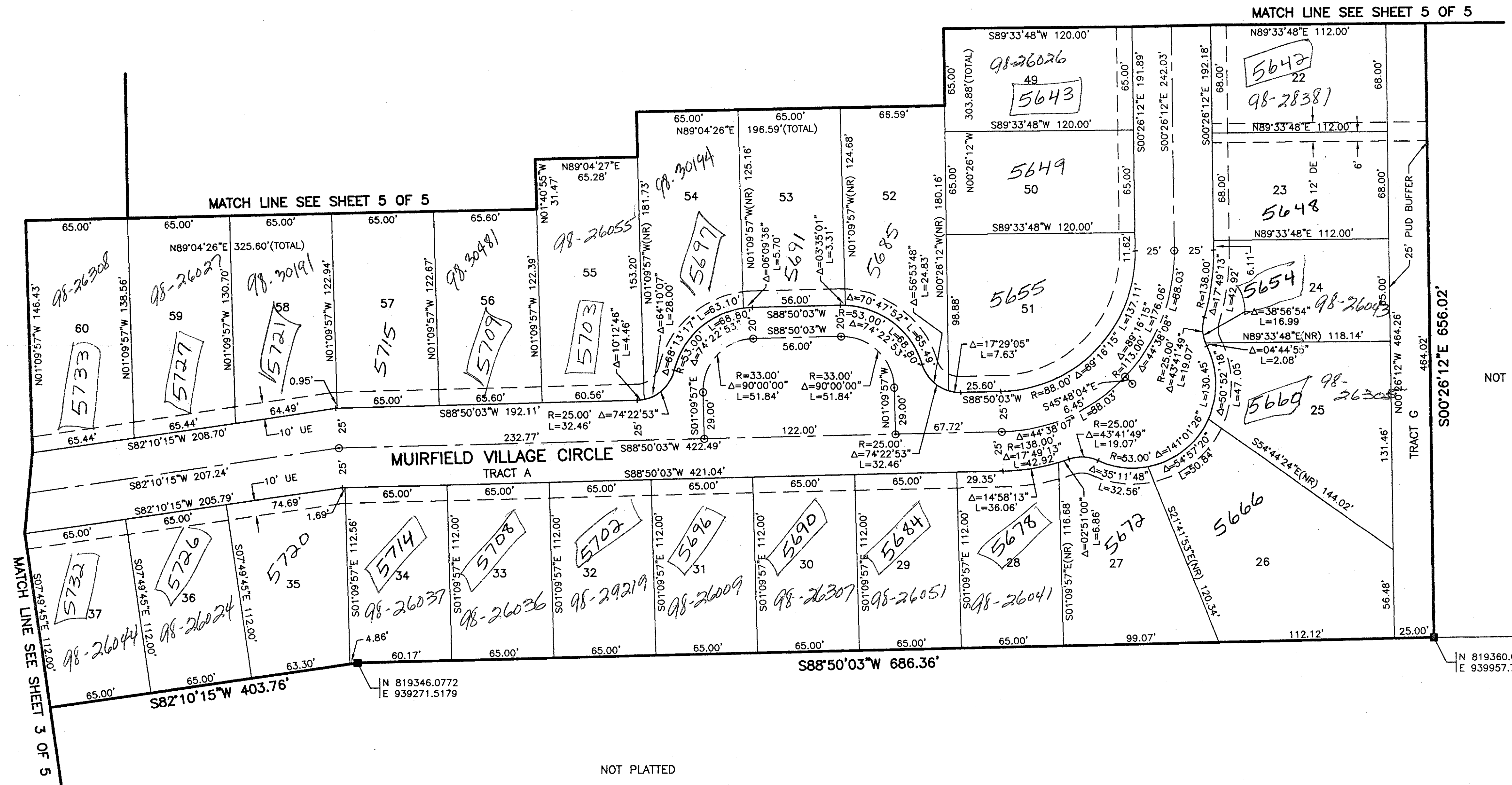


0587-023

193

STATE OF FLORIDA  
COUNTY OF PALM BEACH  
THIS PLAT WAS FILED FOR  
RECORD \_\_\_\_\_ DAY OF \_\_\_\_\_  
AD, 1998 AND DULY RECORDED  
IN PLAT BOOK \_\_\_\_\_ ON PAGES  
\_\_\_\_\_ AND \_\_\_\_\_  
DOROTHY H. WILKEN, CLERK  
BY: \_\_\_\_\_, D.C.

CIRCUIT COURT SEAL



- LEGEND**
- A ARC LENGTH
  - AME ACCESS AND MAINTENANCE EASEMENT
  - BE BUFFER EASEMENT
  - Δ CENTRAL (DELTA) ANGLE
  - DE DRAINAGE EASEMENT
  - FPL FLORIDA POWER & LIGHT
  - LAE LIMITED ACCESS EASEMENT
  - LME LAKE MAINTENANCE EASEMENT
  - LMAE LAKE MAINTENANCE ACCESS EASEMENT
  - POB POINT OF BEGINNING
  - POC POINT OF COMMENCEMENT
  - PUD PLANNED UNIT OF DEVELOPMENT
  - (NR) NON-RADIAL
  - ORB OFFICIAL RECORD BOOK
  - PB PLAT BOOK
  - PG(S) PAGE(S)
  - R RADIUS
  - (TYP) TYPICAL
  - UE UTILITY EASEMENT
  - PERMANENT REFERENCE MONUMENT
  - FOUND PLS# 4763
  - PERMANENT REFERENCE MONUMENT
  - SET PLS# 4763
  - PERMANENT CONTROL POINT
  - SET PLS# 4763
  - € CENTERLINE

NOT PLATTED

PET. 87-112F  
ALLOC. #0001  
5/2/2/I

SUBDIVISION \* Winston Trails  
BOOK 83  
PAGE 193  
FLOOD MAP # 1756  
ZONING RS/ISE  
SE 87-112  
ZIP CODE 33463  
PUD NAME Winston Trails

REV: 04-22-98  
CAD FILE:  
MUSSWINT/WINTRP28

0587-023

THIS INSTRUMENT WAS PREPARED BY MARY HANNA CLODFELTER, P.S.M. IN THE OFFICES OF MOCK, ROOS & ASSOCIATES, INC., 5720 CORPORATE WAY, WEST PALM BEACH, FLORIDA 33407.

SCALE:  
1"=40'  
P.A. NO.:  
95200.02  
DATE:  
DECEMBER 1997  
DRAWING NO.  
45-42-02-99

**MOCK • ROOS**  
ENGINEERS • SURVEYORS • PLANNERS  
5720 Corporate Way, West Palm Beach, Florida 33407  
(561) 683-3113, fax 478-7248

**WINSTON TRAILS  
PARCEL FOURTEEN**  
PART OF WINSTON TRAILS P.U.D.  
SITUATE IN SECTION 2, TOWNSHIP 45 SOUTH,  
RANGE 42 EAST  
PALM BEACH COUNTY, FLORIDA

SHEET 4 OF 5